

# WEAR PARTS

## MODEL 75XP

DISC-STYLE CHIPPER



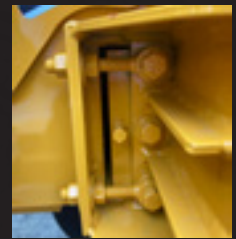
(Model 75XP Knife)



(Banded Belt)



(Hydraulic Filter)



(Anvil)

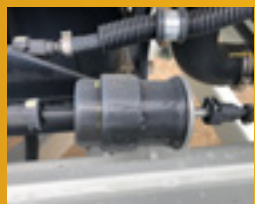
### MODEL 75XP

BANDIT PART NUMBER	DESCRIPTION	QUANTITY
900-9904-43	Knife - 1/2" x 4" x 8-3/8"	2
900-4916-40	Knife Bolt - 5/8" x 2"	6
900-4903-93	Knife Nut - 5/8"	6
907-2000-07	Anvil w/ Hardware	1
900-1918-17	Banded Belt - 2/BX60	1
900-3900-10	AE-10 Hydraulic Filter	1

# Engine Filters

\*\*\* Below are the engine filter part numbers for the various engines offered on the Model 75XP \*\*\*

MODEL 75XP				
ENGINE	FUEL FILTER	OIL FILTER	AIR FILTER, PRIMARY	AIR FILTER, SECONDARY
Kohler 25 HP	900-6912-37	900-6903-61	900-6924-18	900-6924-17
Kohler 37 HP	900-6912-37	900-6903-73	900-6924-18	900-6924-17
Briggs 35 HP	900-6952-36	900-6924-09	900-6924-18	900-6924-17



(Fuel Filter)



(Oil Filter)



(Primary Air Filter)



(Secondary Air Filter)

Place Dealer  
Contact Info  
Sticker



6750 MILLBROOK ROAD • REMUS, MICHIGAN 49340  
 WWW.BANDITCHIPPERS.COM • SALES@BANDITCHIPPERS.COM  
 P: 1-800-952-0178 • F: 1-989-561-2273

