

# WEAR PARTS

## MODEL 65XP

DISC-STYLE CHIPPER



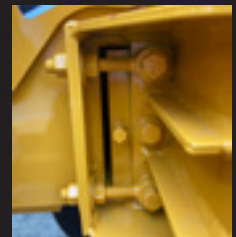
(Model 65XP Knife)



(Banded Belt)



(Hydraulic Filter)



(Anvil)

### MODEL 65XP

BANDIT PART NUMBER	DESCRIPTION	QUANTITY
900-9902-00	Knife - 1/2" x 4" x 7-1/4"	2
900-4901-04	Knife Bolt - 1/2" x 2"	6
900-4900-27	Knife Nut - 1/2" -	6
626-0500-69	Anvil w/ Hardware	1
900-1918-17	Banded Belt - 2/BX60	1
900-3900-10	AE-10 Hydraulic Filter	1



# Engine Filters

\*\*\* Below are the engine filter part numbers for the various engines offered on the Model 65XP \*\*\*

MODEL 65XP				
ENGINE	FUEL FILTER	OIL FILTER	AIR FILTER, PRIMARY	AIR FILTER, SECONDARY
Kohler 25 HP	900-6912-37	900-6903-61	900-6924-18	900-6924-17
Kohler 37 HP	900-6912-37	900-6903-73	900-6924-18	900-6924-17
Briggs 35 HP	900-6952-36	900-6924-09	900-6924-18	900-6924-17



(Fuel Filter)



(Oil Filter)



(Primary Air Filter)



(Secondary Air Filter)

Place Dealer  
Contact Info  
Sticker



6750 MILLBROOK ROAD • REMUS, MICHIGAN 49340  
 WWW.BANDITCHIPPERS.COM • SALES@BANDITCHIPPERS.COM  
 P: 1-800-952-0178 • F: 1-989-561-2273

