

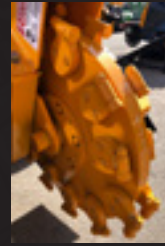
# WEAR PARTS

## MODEL 2650

RUBBER TIRE STUMP GRINDER



(Revolution Wheel)



(Greenteeth Wheel)

### MODEL 2650

BANDIT PART NUMBER	DESCRIPTION	QUANTITY
<b>BANDIT WHEEL WITH GREENTEETH</b>		
900-9938-59	900 Series Tooth w/ Nut	18
900-9907-86	900 Series Angle Pocket	12
900-9907-87	900 Series Straight Pocket	6
900-9907-14	900 Series Pocket Bolt	18
<b>NEW REVOLUTION WHEEL</b>		
900-9912-23	Hex Side Tooth	16
900-9912-24	Hex Lead Tooth	8
900-9909-99	Tooth Nut	24
900-9912-78	Weld in Pocket	8
900-9912-25	Pinned Pocket	8
900-9912-26	Unpinned Pocket	8

# Additional Wear Parts

## ENGINE FILTERS (KOHLER 74)

PART NUMBER	DESCRIPTION	QUANTITY
900-6953-41	Fuel Filter	1
900-6953-42	Oil Filter	1
900-6977-02	Air Filter Primary	1
900-6977-03	Air Filter Secondary	1

## HYDRAULIC FILTERS

PART NUMBER	DESCRIPTION	QUANTITY
900-3950-58	In Tank Hydraulic Filter	1
900-3931-99	Hydraulic Filter (High Pressure)	2
900-3944-57	Pump Charge Pressure Filter	1
900-3925-21	Suction Screen	2



(Fuel Filter)



(Oil Filter)



(Primary Air Filter)



(Secondary Air Filter)

Place Dealer  
Contact Info  
Sticker



**Bandit**  
EMPLOYEE-OWNED

6750 MILLBROOK ROAD • REMUS, MICHIGAN 49340  
WWW.BANDITCHIPPERS.COM • SALES@BANDITCHIPPERS.COM  
P: 1-800-952-0178 • F: 1-989-561-2273

