

WEAR PARTS

MODEL 90XP

DISC-STYLE CHIPPER



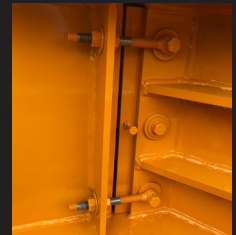
(Model 90XP Knife)



(Banded Belt)



(Hydraulic Filter)



(Anvil)

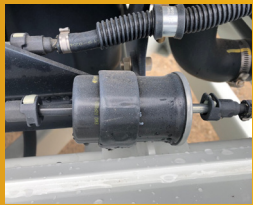
MODEL 90XP

BANDIT PART NUMBER	DESCRIPTION	QUANTITY
900-9901-10	Knife - 1/2" x 4 x 5-1/8"	4
900-4935-11	Knife Bolt - 1/2" x 2 1/2"	8
900-4900-27	Nut - 1/2"	8
986-0501-66	Anvil w/ Hardware	1
900-1906-70	Banded Belt - 3/5VX-800 (Kohler 37)	1
900-1905-89	Banded Belt - 4/5VX-800 (All other engines)	1
900-3900-10	AE-10 Hydraulic Filter	1

Engine Filters

*** Below are the engine filter part numbers for the various engines offered on the Model 90XP ***

MODEL 90XP				
ENGINE	FUEL FILTER	OIL FILTER	AIR FILTER, PRIMARY	AIR FILTER, SECONDARY
Cat 74	900-6938-68	900-6938-69	900-6928-88	900-6938-69
Ford 84	900-6998-14	900-6998-13	900-6024-44	900-6024-45
Kohler 49	900-6953-41	900-6953-42	900-6977-02	900-6977-03
Kohler 74	900-6953-41	900-6953-42	900-6977-02	900-6977-03
Kohler 37 HP	900-6912-37	900-6903-73	900-6924-18	900-6924-17



(Fuel Filter)



(Oil Filter)



(Primary Air Filter)



(Secondary Air Filter)

Place Dealer
Contact Info
Sticker



6750 MILLBROOK ROAD • REMUS, MICHIGAN 49340
 WWW.BANDITCHIPPERS.COM • SALES@BANDITCHIPPERS.COM
 P: 1-800-952-0178 • F: 1-989-561-2273

