

MODEL SG-75

Track Stump Grinder

The Model SG-75 is the **preferred solution** by a variety of stump grinding professionals due to its **aggressive grinding capabilities** and **ease of maintenance**. To see how an SG-75 can enhance your stump grinding operation, call your local Bandit dealer to give it a try today!



POWER THROUGH STUMPS

The cutterwheel on the SG-75 is driven by a gearbox drive system providing abundant grinding power to grind larger diameter stumps efficiently. A Kohler 74 horsepower engine with 221 ft/lbs. of torque provides enhanced power to grind through massive stumps with ease.

ELECTRIC CLUTCH

The cutterwheel is easily engaged utilizing the radio remote control activating a Warner electric clutch. (The Warner clutch is maintenance-free).

THE RIGHT TRACK

The rubber tracks on the SG-75 expand to 55", creating an extremely stable platform for grinding. To access tight or restricted areas, the tracks retract into 35", easily fitting through most backyard gates.

THE KING OF CONTAINMENT

Engineered for maximum chip containment along with fold down chip curtains, the SG-75 collects massive amounts of debris into a concentrated pile under the machine reducing the time needed for clean-up after grinding is completed.

STANDARD WIRELESS RADIO REMOTE

Control your machine with Bandit's intuitive radio remote control. Every function on the unit is yours to command with the push of a button – including cutterwheel and track functions, blade, throttle, travel and swing speed, and more!



Bandit

EMPLOYEE-OWNED

6750 Millbrook Rd. • Remus, MI 49340 • 1-800-952-0178

FIND US ONLINE     WWW.BANDITCHIPPERS.COM

Hand-Fed Chippers • Stump Grinders • Whole Tree Chippers
Horizontal Grinders • Attachments

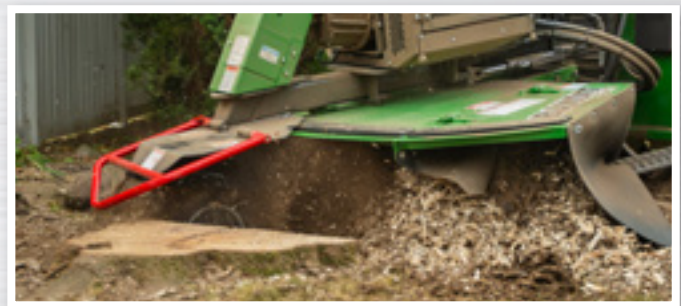
SPECIFICATIONS

MEASUREMENTS

Length:	134"	340.4 cm
Track Width:	35" - 55"	88.9 - 139.7 cm
Operating Width:	75"	190.5 cm
Height:	81"	205.7 cm
Weight (lbs.):	4,600 lbs.	2,086.5 kg
Engines:	Kohler 74 HP T4	Kohler 55.2 kW T4
Fuel Tank:	16.25 gallon	61.5 L
Hydraulic Tank:	12 gallon	45.4 L

CUTTER WHEEL SYSTEM

Dimensions:	27" dia. x 1" thick	69 cm x 2.6 cm thick
Engagement:	Clutch	
Teeth:	32	
Cutter Swing:	80"	203.2 cm
Cutter Depth:	23"	58.4 cm
Cutter Height:	31"	78.7 cm

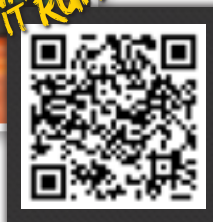


CHIP CONTAINMENT AREA

COMMITTED TO QUALITY & PRODUCTIVITY

Since 1983, Bandit has manufactured equipment for a multitude of wood waste processing markets. The vision since the beginning, is to build quality, highly productive, easy to maintain equipment providing years of dependable service.

The commitment for quality, innovation and dedication is instilled in every employee and is one of the main reasons why Bandit became an Employee-Owned Company (ESOP) in 2018. These core values ensure each Bandit machine will leave the factory ready to exceed your expectations.



MODEL SG-75 FEATURES

- A powerful 74 horsepower Kohler diesel engine
- Bandit's unique Super Sweep system
- Expanding and retracting rubber tracks
- Radio remote control
- Industry best chip containment
- Optional grading blade

SG-75_2024-10

Bandit Offers a Complete Line of Tree Care Equipment:
 Hand-Fed Chippers • Stump Grinders • Whole Tree Chippers
 Horizontal Grinders • Attachments