

MODEL 2890

Hydrostatic Stump Grinder

The Model 2890 is a **high-production stump grinder** available with either a swing-out operator's console or wireless radio remote control. Perfect solution for those looking to grind large-diameter stumps while having the ability to grind stumps in hard-to-reach places. Standard **dual drive wheels** enhance stability and can be removed by a single bolt so the 2890 can fit through a backyard 36" gate.

MANEUVERABLE AND POWERFUL

- CAT 120 or PSI 165 engine options
- Low-maintenance hydrostatic drive
- Optional hydraulic grading blade



DURABLE CUTTER WHEEL DRIVE SYSTEM

The cutter wheel is engaged utilizing a hydrostatic system and driven with a hydraulic motor mounted on the side. No jackshafts, bearings or belts are needing maintained on this unit increasing productivity and reducing downtime. The Bandit wheel with Green teeth or New Revolution wheel with hex teeth provide an aggressive cutting action with easy to change pockets and teeth.



RADIO REMOTE CONTROL (OPTIONAL)

All track and grinding functions are controlled by a wireless radio remote with tether back-up making it easy to operate the unit in almost any position.



Bandit

EMPLOYEE-OWNED

6750 Millbrook Rd. • Remus, MI 49340 • 1-800-952-0178

FIND US ONLINE     WWW.BANDITCHIPPERS.COM

Hand-Fed Chippers • Stump Grinders • Whole Tree Chippers
The Beast® Horizontal Grinders • Track Carriers • Attachments

All specifications, dimensions and options are subject to change without notice, and were current at the time of printing. Dimensions may vary, depending on options and engines selected. Bandit Industries, Inc. reserves the right to change designs, specifications and options without prior notice. © 2024 Bandit Industries, Inc. All Rights Reserved.

CALL YOUR LOCAL BANDIT SALES REPRESENTATIVE TO SCHEDULE A DEMONSTRATION TODAY!

SPECIFICATIONS

MEASUREMENTS (Rubber Tire Unit)

Length:	162"	411.5 cm
Width:	35" to 55.5"	88.9 to 141 cm
Height:	80"	203.2 cm
Weight (lbs.):	5,320 lbs.	2,413.1 kg
Engines:	CAT 120 diesel or PSI 165 gas engine options	
Fuel Tank:	12.5 or 19 gallons	47.3 or 71.9 L
Hydraulic Tank:	29.5 gallons	111.7 L

CUTTER WHEEL SYSTEM

Bandit wheel with Green teeth or New Revolution wheel with hex teeth.

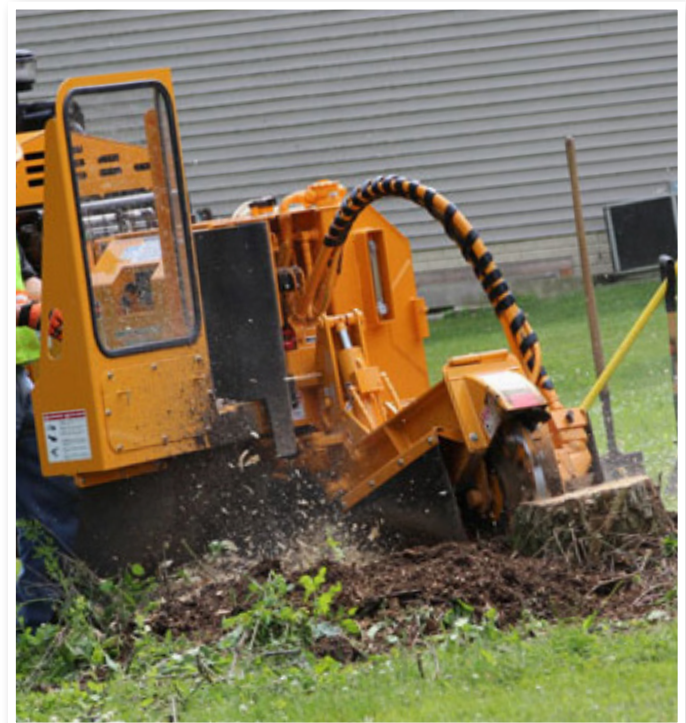
Engagement:	Hydrostatic	
Teeth:	24 or 32	
Cutter Swing:	75"	190.5 cm
Cutter Depth:	24"	61 cm
Cutter Height:	31.5"	80 cm



COMMITTED TO QUALITY & PRODUCTIVITY

Since 1983, Bandit has manufactured equipment for a multitude of wood waste processing markets. The vision since the beginning, is to build quality, highly productive, easy to maintain equipment providing years of dependable service.

The commitment for quality, innovation and dedication is instilled in every employee and is one of the main reasons why Bandit became an Employee-Owned Company (ESOP) in 2018. These core values ensure each Bandit machine will leave the factory ready to exceed your expectations.



Bandit Offers a Complete Line of Tree Care Equipment:
 Hand-Fed Chippers • Stump Grinders • Whole Tree Chippers
 Horizontal Grinders • Attachments