

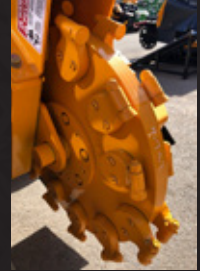
WEAR PARTS

MODEL SG-75

TRACK STUMP GRINDER



(Revolution Wheel)



(Greenteeth Wheel)

MODEL SG-75

BANDIT PART NUMBER	DESCRIPTION	QUANTITY
NEW REVOLUTION WHEEL		
900-9912-23	Hex Side Tooth	30
900-9912-24	Hex Lead Tooth	12
900-9950-70	Hex Plow Tooth	2
900-9909-99	Tooth Nut	44
900-9912-78	Weld in Pocket	12
900-9933-93	Carbide Hex Pinned	12
900-9933-94	Carbide Hex Unpinned	12
900-9912-25	Pinned Pocket	4
900-9912-26	Unpinned Pocket	4
BANDIT WHEEL WITH GREENTEETH		
900-9918-24	1100 Series Tooth w/ Nut	32
900-9907-33	1100 Series Angle Counter Bore Pocket	12
900-9937-34	1100 Series Angle Threaded Pocket	12
900-9907-35	1100 Series Straight Counter Bore Pocket	2
900-9907-36	1100 Series Threaded Straight Pocket	2
900-9907-37	1100 Series Reverse Counter Bore Pocket	2
900-9907-38	1100 Series Threaded Reverse Pocket	2
900-9915-96	2 1/4" Greenbolt	24
900-9910-68	2 1/2" Greenbolt	12
900-9915-97	2 3/4" Greenbolt	12
900-9943-79	1/8" Spacer	8
900-9943-80	1/4" Spacer	8

Additional Wear Parts

ENGINE FILTERS (KOHLER 74)

PART NUMBER	DESCRIPTION	QUANTITY
900-6953-41	Fuel Filter	1
900-6953-42	Oil Filter	1
900-6977-02	Air Filter Primary	1
900-6977-03	Air Filter Secondary	1

HYDRAULIC FILTERS

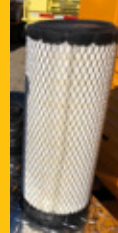
PART NUMBER	DESCRIPTION	QUANTITY
3990-31-06	In tank hydraulic filter	1
900-3993-04	Hydraulic filter (high pressure)	2
3990-31-02	Suction Screen	1



(Fuel Filter)



(Oil Filter)



(Primary Air Filter)



(Secondary Air Filter)

Place Dealer
Contact Info
Sticker



6750 MILLBROOK ROAD • REMUS, MICHIGAN 49340
 WWW.BANDITCHIPPERS.COM • SALES@BANDITCHIPPERS.COM
 P: 1-800-952-0178 • F: 1-989-561-2273

