

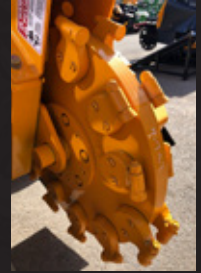
# WEAR PARTS

## MODEL 2900

TRACK STUMP GRINDER



(Revolution Wheel)



(Greenteeth Wheel)

### MODEL 2900

BANDIT PART NUMBER	DESCRIPTION	QUANTITY
<b>BANDIT WHEEL WITH GREENTEETH</b>		
900-9918-24	1100 Series Tooth w/ Nut	24
900-9907-09	1100 Series Angle Counter Bore Pocket	10
900-9907-10	1100 Series Angle Threaded Pocket	10
900-9907-47	1100 Series Straight Counter Bore Pocket	1
900-9907-11	1100 Series Threaded Straight Pocket	1
900-9907-48	1100 Series Reverse Counter Bore Pocket	1
900-9907-49	1100 Series Threaded Reverse Pocket	1
900-9915-96	Pocket Bolt	24
<b>NEW REVOLUTION WHEEL</b>		
900-9912-23	Hex Side Tooth	24
900-9912-24	Hex Lead Tooth	8
900-9909-99	Tooth Nut	32
900-9912-78	Weld in Pocket	8
900-9912-25	Pinned Pocket	12
900-9912-26	Unpinned Pocket	12

# Additional Wear Parts

\*\*\* Below are the engine filter part numbers for the various engines offered on the Model 2890 \*\*\*

## ENGINE FILTERS

(PSI 165)

PART NUMBER	DESCRIPTION	QUANTITY
900-6922-96	Fuel Filter	1
900-6903-13	Oil Filter	1
904-0006-62	Air Filter Primary	1
904-0006-63	Air Filter Secondary	1

## ENGINE FILTERS

(CAT 120)

PART NUMBER	DESCRIPTION	QUANTITY
900-6938-68	Fuel Filter	1
900-6938-69	Oil Filter	1
900-6938-66	Air Filter Primary	1
900-6938-67	Air Filter Secondary	1

## HYDRAULIC FILTERS

PART NUMBER	DESCRIPTION	QUANTITY
900-3950-58	In tank hydraulic filter	1
900-3931-99	High pressure filter	2
900-3944-57	Pump charge pressure filter	1
900-3932-05	Suction Screen	2



(Fuel Filter)



(Oil Filter)



(Primary Air Filter)



(Secondary Air Filter)

Place Dealer  
Contact Info  
Sticker



6750 MILLBROOK ROAD • REMUS, MICHIGAN 49340  
 WWW.BANDITCHIPPERS.COM • SALES@BANDITCHIPPERS.COM  
 P: 1-800-952-0178 • F: 1-989-561-2273

