

# MODEL 3590 TRACK

## 30" Capacity Whole Tree Chipper

The **ideal machine** for converting tops from logging and land clearing operations into dimensional chips. The Model 3590 transforms logging slash, land clearing waste and brush into a **uniform, saleable chip product** faster and more efficiently than ever before.



### SUPERIOR PRODUCTION

Bandit whole tree chippers feature Bandit's unique infeed system, which combines to create one of the easiest feeding chippers on the market. This keeps operators busy feeding the machine instead of repositioning material.

### FULLY PACK TRAILERS

We're known throughout the industry for packing chip trailers fuller and reducing the number of trips to the dump site. And Bandit can do it without the need for horsepower robbing, fuel chugging chip accelerators.

### MAXIMIZE YOUR UPTIME

Bandit chippers are constructed to withstand rigorous chipping every day, all day. We use only the highest quality components and materials during construction to help ensure that your machine will be ready to go to work when you are.

### CONFIDENCE TO KEEP RUNNING

All Bandit Whole Tree Chippers come standard with an industry leading 5-year "GUTS" warranty covering the Bandit fabricated components of the drum and slide box feed system. These components are so durable and rugged Bandit is proud to offer this extended warranty as a standard feature

### TOP NOTCH SUPPORT

Whether you are supported by the Bandit factory or a dedicated authorized Bandit dealer, you can be confident that our team of trained professionals have the knowledge and dedication to serve all of your parts, sales and service needs!



# Bandit

EMPLOYEE-OWNED

6750 Millbrook Rd. • Remus, MI 49340 • **1-800-952-0178**

FIND US ONLINE     [WWW.BANDITCHIPPERS.COM](http://WWW.BANDITCHIPPERS.COM)

Hand-Fed Chippers • Stump Grinders • Whole Tree Chippers  
Horizontal Grinders • Attachments

MEASUREMENTS	3590 TRACK	
Length:	31'5"	1,280 cm
Width:	11' 10"	355.6 cm
Height:	12' 3"	401.3 cm
Weight:	72,000 - 75,000 lbs. (28,122.7-29,483.5 kg)	
Engines:	755 - 1,050 HP	
Fuel Tank:	400 gal.	1,514 L
Hydraulic Tank:	100 gal.	378.5 L

DIMENSIONS		
Capacity:	30" Capacity	76.2 cm Capacity
Opening:	30" tall x 48" wide	76.2 cm x 122 cm wide
Drum:	37" dia. x 48" wide	94 cm dia. x 122 cm wide
RPM:	Approximately 1,120 RPM	
Chipper Shaft:	6" diameter	15.2 cm diameter

Knives: .625" thick x 6" wide x 12.125" long in (8) Pockets

Discharge: Forestry style stationary discharge with hydraulic deflector

Feed System: Slide Box with (2) 48" wide x 15.75" diameter (122 cm x 40 cm) top feed wheels and 48" wide x 10.625" diameter (122 cm x 27 cm) bottom feed wheels

## UNDERCARRIAGE AND TRACK OPTIONS

Track: 325L Steel tracks equipped with Caterpillar track under carriage, and double or triple grouser shoes. 1.5-3.3 MPH (2.4-5.3km/h) track speed, 35" (88.9 cm) ground clearance

## Standard & Custom Colors Available

Choose from two standard colors, or select a custom color to match your fleet.



Bandit Yellow



Green

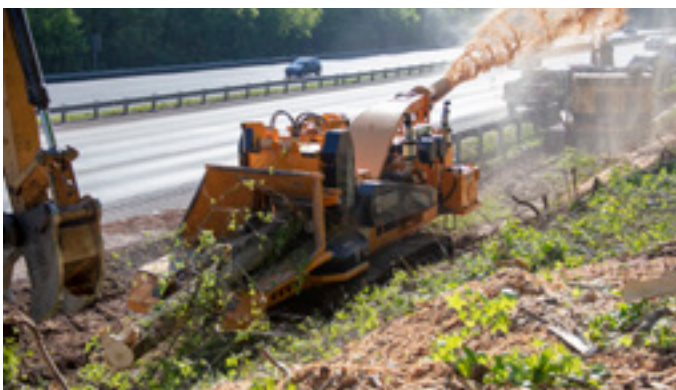
## COMMITTED TO QUALITY & PRODUCTIVITY

Since 1983, Bandit has manufactured equipment for a multitude of wood waste processing markets. The vision since the beginning, is to build quality, highly productive, easy to maintain equipment providing years of dependable service.

The commitment for quality, innovation and dedication is instilled in every employee and is one of the main reasons why Bandit became an Employee-Owned Company (ESOP) in 2018. These core values ensure each Bandit machine will leave the factory ready to exceed your expectations.

## GO-ANYWHERE TRACK MOBILITY

The Model 3590 Track comes standard with a Caterpillar 325L steel track undercarriage. This feature allows it to travel over rough terrain not accessible by towable units. It also eliminates the need to forward or skid material to the chipper – the operator can take the chipper to the trees.



## TEST OUR METAL

When you choose a Bandit whole tree chipper, you'll experience more uniform chip production, smoother and more efficient chipping, long-lasting components and improved fuel economy. We invite you to see for yourself by scheduling a demo with your nearest authorized Bandit dealer.



**Bandit Offers a Complete Line of Tree Care Equipment:**  
 Hand-Fed Chippers • Stump Grinders • Whole Tree Chippers  
 Horizontal Grinders • Attachments